

advancing health worldwide™

University of California, San Francisco

Education

- Dentistry
- Medicine
- Nursing
- Pharmacy
- Graduate Division

Research

- Patient Care
- Community

Library

- Computing
- Employment
- Emergency
- Give to UCSF
- Advocacy for UCSF

Directory

- A-Z Website List
- Campus Maps
- UCSF Mobile Web

Podcasts & Feeds

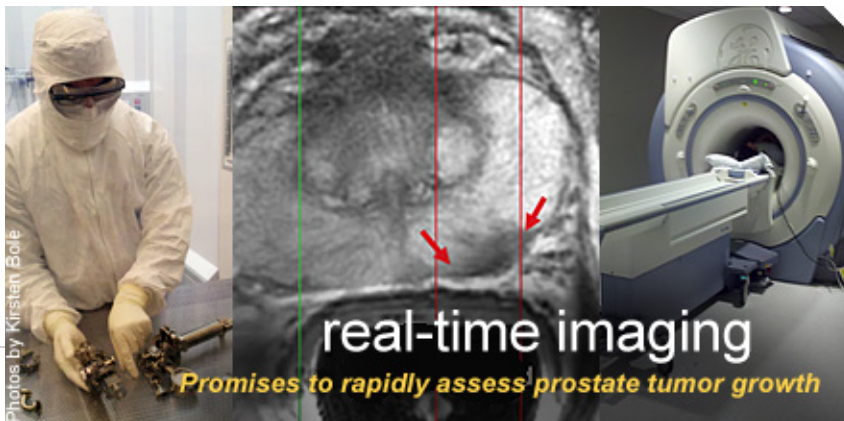
UCSF Chancellor

- Diversity at UCSF
- UCSF Today
- UCSF Budget
- UCSF Identity
- UCSF Mission Bay
- UCSF Profiles
- UCSF & Stem Cells



Access UCSF Specialists & Services

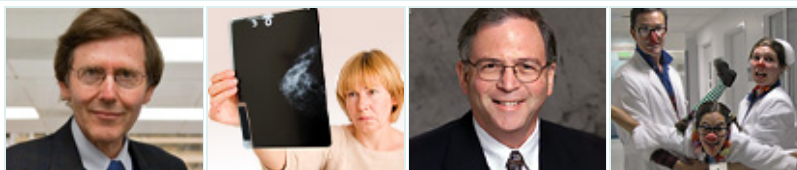
Shortcuts



A new imaging technology that promises to quickly identify fast-growing tumors and assess whether treatment is working has moved into clinical trials for prostate cancer at Mission Bay...

science café

ucsf today



For Stem Cell Researchers at UCSF – Already at the Forefront – Yamanaka’s Work Galvanizes Field

Teeth Earn Starring Role in Field of Regenerative Medicine

Smoking with Breast Cancer - Especially HER2-negative Cancer - Lowers Survival Odds

CT Screening for Lung Cancer in Smokers Saves Lives

Genetics Research Accelerates Pace of Knowledge Gains

Cell Phones Pose Health Risks, Says Devra Davis at UCSF Seminar

Parkinson’s Disease Protein Impedes Nerve Signaling Long

UCSF Ophthalmologist Receives Prestigious Jose Rizal International Medal

Clowns Provide Cheer at UCSF Benioff Children’s Hospital

Challenge for the Children Fundraising Competition Heats Up

Inaugural UC Global Health Day to Highlight Research

Write to Fight Cancer Workshop Gives Tools to Face Disease

AAMC Names UCSF Medical Center CEO Laret Chair-Elect

Synapse (Student Newspaper)

People

news center

Drop in Breast Cancer Rates Directly Tied to Reduced Hormone Therapy

New Prostate Cancer Imaging Shows Real-Time Tumor Metabolism

Impact of Salt in Teen Diet Makes National Headlines

Macy’s Annual Tree Lighting to Benefit UCSF Benioff Children’s Hospital

Use of HIV Medications Reduces Risk of HIV Infection in Uninfected People

UCSF News Releases

UCSF Media Coverage

News from Affiliates



Challenge for the Children
To benefit the UCSF Benioff Children’s Hospital
[Join the Cause](#)

calendar

November 30 Frisbee golf

December 1 Fitness Center Open House (no fee access)

December 3 UCSF Staff Appreciation at Parnassus

December 7 The Holiday Sale at Laurel Heights

December 13 UCSF Staff Appreciation at Mt. Zion

Source:

Kristen Bole

kbole@pubaff.ucsf.edu

(415) 502-NEWS (6397)

November 29, 2010

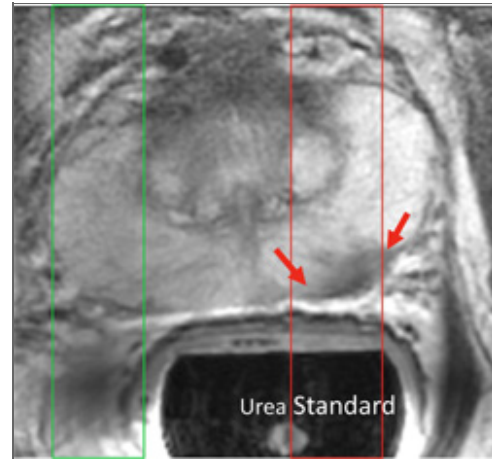
New prostate cancer imaging shows real-time tumor metabolism

A UCSF research collaboration with GE Healthcare has produced the first results in humans of a new technology that promises to rapidly assess the presence and aggressiveness of prostate tumors in real time, by imaging the tumor's metabolism.

This is the first time researchers have used this technology to conduct real-time metabolic imaging in a human patient and represents a revolutionary approach to assessing the precise outlines of a tumor, its response to treatment and how quickly it is growing.

Data on the first four patients will be presented on Dec. 2 at the Radiology Society of North America's weeklong annual conference.

The initial results validate extensive preclinical research that has linked the speed at which tumors metabolize nutrients to the aggressiveness of their growth. The new imaging technique also has been used to show early biochemical changes in animal tumors in real time as they respond to medication therapy, long before a physical change occurs.



First Human Data: *Hyperpolarized Pyruvate Injection in Subjects with Prostate Cancer.*



Sarah Nelson,
PhD

So far, the technology has produced the same response in human patients' tumors as it did in laboratory studies, even at the lowest dose, according to Sarah Nelson, PhD, a professor of Radiology and Biomedical Imaging and a member of the California Institute for Quantitative Biosciences (QB3) at UCSF.

"This is a key milestone that could dramatically change clinical treatment for prostate cancer and many other tumors," Nelson said. "We had shown this worked in animal models and tissues samples. Now, in men, we are seeing exactly the type of results we had hoped for."

For an oncologist, that means immediate feedback on whether a patient's therapy is working, either during standard treatment or in a clinical trial.

"If we can see whether a therapy is effective in real time, we may be able to make early changes in that treatment that could have a very real impact on a patient's outcome and quality of life," said Andrea Harzstark, MD, an oncologist with the UCSF Helen Diller Family Comprehensive Cancer Center who is leading the clinical aspects of the current study.

More than 200,000 men are diagnosed with prostate cancer each year and 28,000 die from it, making it one of the most common cancer in men nationwide and also one of the leading causes of cancer death in men, according to the Centers for Disease Control.

Yet the disease ranges widely in its rate of growth and aggressiveness, according to John Kurhanewicz, PhD, a UCSF expert in prostate cancer imaging. As a result, there is great debate over the ideal strategy for treating the disease, he said, leaving patients with a difficult and potentially life-changing decision over how aggressively to respond to the disease.

“This test could give both physicians and patients the information they need to make that decision,” said Kurhanewicz, whose work with Dan Vigneron, PhD, and their colleagues from the UCSF Department of Radiology and Biomedical Imaging first linked a prostate tumor’s production of lactate to tumor aggressiveness. Other researchers also have linked that lactate production to tumor aggressiveness and response to therapy in other cancers.



John
Kurhanewicz, PhD

The method uses compounds involved in normal tissue function – in this case, pyruvate, which is a naturally occurring by-product of glucose, and lactate, also known as lactic acid – and uses newly developed equipment to increase the visibility of those compounds by a factor of 50,000 in a magnetic resonance imaging (MRI) scanner.

That process requires pyruvate to be prepared in a strong magnetic field at a temperature of minus 272°C, then rapidly warmed to body temperature and transferred to the patient in an MRI scanner before the polarization decays back to its native state.

The result is a highly defined and clear image of the tumor’s outline, as well as a graph of the amount of pyruvate in the tumor and the rate at which the tumor converts the pyruvate into lactate.

The sterile production process requires a dedicated clinical pharmacist with the knowledge of both quality control and of clinical practice. As the birthplace of the field of clinical pharmacy and one of only a handful of schools nationwide with drug production expertise, the UCSF School of Pharmacy and contributions of Marcus Ferrone, PharmD, and his colleagues in the Drug Products Services Laboratory were integral to this process.



Dan Vigneron,
PhD

The procedure must take place within minutes, which meant integrating a clean room into the scanning facility. QB3 also worked with GE Healthcare in designing Byers Hall, in which the Surbeck Laboratory of Advanced Imaging is housed, to accommodate the extremely strong magnetic field of the MRI scanner and enable time-sensitive experiments.

“All of that insight is why we moved this technology to Northern California,” said Jonathan Murray, general manager, Metabolic Imaging at GE Healthcare. “This is a huge accomplishment UCSF and QB3 have achieved. They brought together the best engineering from UC Berkeley and the best bioscience and pharmacy knowledge from UCSF, and are now demonstrating the technology in a world-renowned academic medical center. We are delighted with the speed of progress of this collaboration. The science is very exciting.”

The first trial involves men with prostate cancer involved in the “watchful waiting” phase of treatment, Nelson said. Future studies will directly compare these data with the results from surgically removed tumors and will look at how specific therapies change tumor metabolism. UCSF also will be studying the process for use in brain tumor patients.

The project’s funding through the National Institute of Biomedical Imaging and Bioengineering, in the National Institutes of Health, was critical in adapting this technology for humans and developing new ways to obtain the MR metabolic imaging data. The project received further support from the American Recovery & Reinvestment Act and the UC Discovery Program.

Initial development of this instrumentation and its demonstration of proof of principle was conducted by Jan Henrik Ardenkjaer-Larsen, Klaes Golman and

other colleagues from across GE. UCSF customized that principle and obtained the Investigational New Drug (IND) approval from the Food and Drug Administration to use the hyperpolarized pyruvate in humans.

These concepts are still investigational and not being offered for sale, nor have they been cleared or approved by the FDA for commercial availability.



Marcus Ferrone,
PharmD

ABOUT GE HEALTHCARE

GE Healthcare provides transformational medical technologies and services that are shaping a new age of patient care. Our broad expertise in medical imaging and information technologies, medical diagnostics, patient monitoring systems, drug discovery, biopharmaceutical manufacturing technologies, performance improvement and performance solutions services help our customers to deliver better care to more people around the world at a lower cost. In addition, we partner with healthcare leaders, striving to leverage the global policy change necessary to implement a successful shift to sustainable healthcare systems.

Our “healthmagination” vision for the future invites the world to join us on our journey as we continuously develop innovations focused on reducing costs, increasing access and improving quality around the world. Headquartered in the United Kingdom, GE Healthcare is a unit of General Electric Company (NYSE: GE). Worldwide, GE Healthcare employees are committed to serving healthcare professionals and their patients in more than 100 countries. For more information about GE Healthcare, visit our website at www.gehealthcare.com.

ABOUT QB3 AND UCSF

QB3 is a cooperative effort among private industry and more than 200 scientists at UCSF, UC Berkeley and UC Santa Cruz. One of four California technology institutes, QB3 harnesses the quantitative sciences of information technology, imaging and engineering to integrate and enhance scientific understanding of biological systems, enabling scientists to tackle problems that have been previously unapproachable. Please visit www.qb3.org.

UCSF is a leading university dedicated to promoting health worldwide through advanced biomedical research, graduate-level education in the life sciences and health professions, and excellence in patient care. For more information on UCSF, visit www.ucsf.edu. For specific information on UCSF imaging, visit: www.radiology.ucsf.edu/research.

###

Follow UCSF on Twitter at <http://twitter.com/ucsf>