

Practical monthly updates to help you better serve your patients

# ImagingViews

We look forward to learning more about your needs:  
Please [Contact](#) us or visit our [San Francisco locations](#)

---

Dear Alumni,

We hope to include you in the distribution of a new monthly communication with our referring physicians. Thank you for helping us spread the word about our work. If you do not wish to receive this going forward, please unsubscribe below.

---

## Communicating in 2016 - sharing best practices

We are engaged in another great year of serving physicians and patients. One of the rewards of radiology is working across multiple disciplines in medicine. As always, we hope to collaborate with you to get the best results for your patients.

To that end, we are exploring ways to improve customer outreach and wanted to collaborate with you to identify effective communication sources. Can you help by completing this [quick, 5-minute survey](#)? We look forward to sharing the results with you as we all seek to learn more about best practices in healthcare communications. To say thank you, we will enter your name in a drawing for a \$150.00 gift card for a meal at either Boulettes Larder or Piperade, near our newest location, UCSF Imaging at Montgomery Street in the Waterfront District of downtown San Francisco.

---

[Introducing the most advanced imaging technology to diagnose our most vulnerable patients](#)

---

Patient safety is our first concern. PET/MRI provides more thorough images while lowering radiation, an especially important consideration for children and those whose conditions require repeat imaging.

Watch our Video

---

## Meet our Radiologists



David M. Naeger, MD

When Dr. David Naeger and colleagues conducted a patient survey to determine whether patients wanted to receive their radiology images, some [new information emerged](#). We consider collaboration with our referring physicians critical to successful patient outcomes.

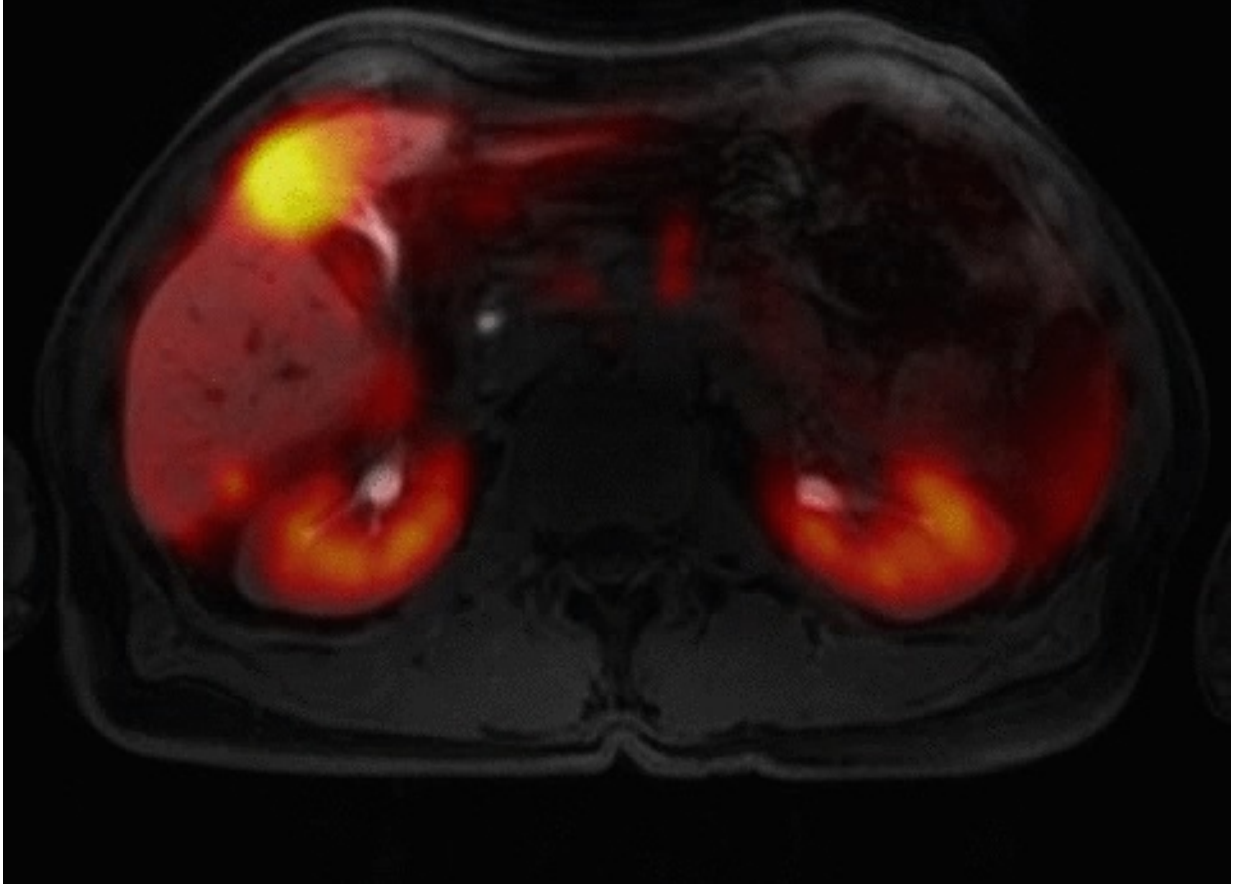


Cindy Lee, MD

[When doctors collaborate as a team](#), patients get better care. Learn how Dr. Cindy Lee and her colleagues work with the physicians co-located at the UCSF Imaging Center at Montgomery Street.

---

What is this image? [Learn about this scan.](#)



---

---

## Upcoming Events - We welcome you to join us at UCSF!

### Margulis Society Alumnus Lecture

"Use of Decision-Support Tools in Radiology: Adding Value to our Reports."

Wednesday, March 23, 5:30 p.m. refreshments, 6:15 p.m. lecture, 7 p.m. reception

UCSF Medical Science Building 513 Parnassus, N 225

Dr. Michael P. Federle, Professor and Associate Chair for Education Department of Radiology, Stanford University

[Learn more.](#)

### Howard Steinbach Memorial Lecture

"The Top 30 Most Common Mistakes Scientific Authors Make."

Wednesday, April 6, 5:00 p.m refreshments, 5:30-6:30 p.m. lecture.

UCSF Medical Science Building, 513 Parnassus, N 217

Dr. Mark Schweitzer, Chair, Department of Radiology

Stony Brook, New York

Editor-in-Chief, Journal of Magnetic Resonance Imaging (JMRI)

[Learn more.](#)

---

### [About Us:](#)

The Department of Radiology and Biomedical Imaging at the University of California, San Francisco is a leading health sciences center focused on serving patients, conducting research, and training the next generation of radiologists. We are proud to have some of the foremost names in diagnostic and interventional radiology developing promising new approaches to identify and treat disease. As an engaged contributor to our local community, we lead the field in the skilled care which enables our patients to benefit fully from our clinical excellence.

---

### [Get world-class imaging for your patients -- How to refer](#)

It is our privilege and pleasure to work with you by providing world-class imaging services to your patients. We look forward to partnering with you to deliver the best possible patient outcomes. Please call our scheduling department at (415) 353-2573 or [contact us](#) anytime.

---

We look forward to learning more about your needs:

[To refer](#) a patient, please call (415) 353-2573

[Contact](#) our administration

Visit our San Francisco [locations](#)

---

See what's happening on our social sites:

