

IMAGING AT YOSEMITE

MAY 22 - 27, 2016
TENAYA LODGE, FISH CAMP, CA
pages 2-11

*22 CME Credits
20 Self-Assess Credits*

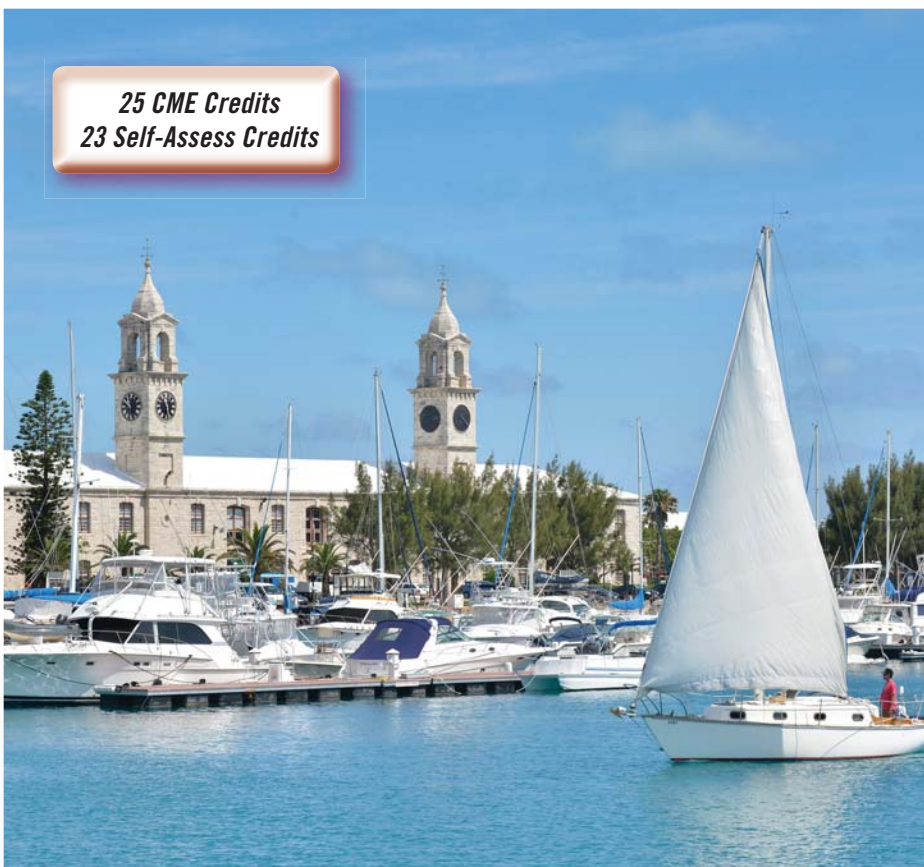


*3 Hands On
Mini-Courses
9 Extra Credits!*

IMAGING IN BERMUDA

JUNE 26 - JULY 1, 2016
FAIRMONT SHOUTHAMPTON, BERMUDA
pages 12-22

*25 CME Credits
23 Self-Assess Credits*



RADIOLOGY AND
BIOMEDICAL IMAGING
UNIVERSITY OF CALIFORNIA
SAN FRANCISCO

PRACTICAL APPLICATIONS IN DIAGNOSTIC IMAGING

MAY 22 – 27, 2016 / YOSEMITE

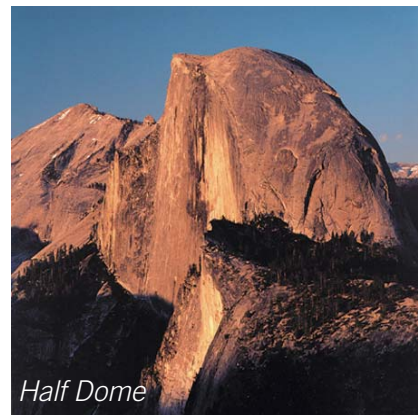
This week long course is designed for both the general and sub-specialty radiologist and is intended to provide an update of recent advances in relevant topics in diagnostic imaging. Current radiologic approaches to diagnosing and interpreting malignancy in the head & neck, chest, breast, abdomen and pediatric patient will be particularly emphasized.

The presentations will focus on practical methods to optimize basic and advanced cross-sectional techniques for CT, MRI, PET/CT, US and plain film, as well as how to recognize and avoid potential pitfalls in interpretation. Speakers will also discuss more advanced and emerging/evolving topics and technologies including MRI of the breast, advanced abdominal imaging techniques, and post-intervention imaging. Daily sessions will conclude with questions and discussion between attendees and faculty.

All topics will allow for **Self-Assessment credits**, up to a maximum of **9 SA credits** (inclusive of 2 in Abdominal, 2 in Thoracic, 2 in Breast, 2 in Interventional, 1 in Pediatrics and 1 in Neuro). As of January 1, 2013, all ABR certified radiologists taking part in maintenance of certification (MOC) are required to earn 75 CME credits every three years, at least 25 of which must be self-assessment. This course, offering self-assessment credits for every session allow participants to “catch up” and allows for more interactive sessions for those already meeting their requirements or not participating in MOC.



Glacier Point by Wikimedia Commons



Half Dome

At the completion of this course, the attendee should be able to:

1. Discuss the diagnostic approach to the incidental pulmonary nodule;
2. Understand the LI-RADS classification and significance for treatment of HCC;
3. Recognize spectrum of findings in the abdomen after ablation procedures;
4. Review the normal appearance of the larynx and nasopharynx;
5. Recognize normal anatomy and common pathological conditions in the shoulder, knee, and wrist;
6. Improve understanding of expected postoperative findings in the abdomen after commonly performed GI surgeries;
7. Apply recent advances in Breast MRI and understand the proper application of the BI-RADS lexicon to MR.

3 OPTIONAL MINI-COURSES

Earn additional credits in optional afternoon sessions in HRCT of the Chest, Prostate MRI, and Musculoskeletal Ultrasound following the morning general sessions. Each mini-course will offer 3 *Category 1 CME Credits™* and 3 Self-Assessment credits. Separate enrollment and registration fee required. *Review mini-course schedules on pages 6–7.*

UCSF Faculty

David M. Naeger, MD
Course Chair

Associate Professor of Radiology
Associate Director, Nuclear Medicine
Residency Program

Matthew D. Bucknor, MD
Assistant Professor of Radiology

Brett M. Elicker, MD
Associate Professor of Clinical Radiology
Chief, Cardiac and Pulmonary Imaging

Jessica H. Hayward, MD
Assistant Professor of Radiology

Tara A. Morgan, MD
Assistant Professor of Radiology

Andrew S. Phelps, MD
Assistant Professor of Radiology

Emily M. Webb, MD
Associate Professor of Clinical Radiology

Ronald J. Zagoria, MD
Professor of Radiology
Chief, Abdominal Imaging



Merced River Waterfalls by David Liu

Enrollment

Pre-registration is encouraged to ensure your space in this course (form on page 23).

Pre-register by March 18, 2016 and save \$75 on your enrollment fee.

TUITION

\$1200 for all medical professionals; registration discounts are available for qualifying attendees, please review the registration form on page 23.

ON-SITE REGISTRATION

Sunday, May 22, 2016 at 7:00 am

The Tenaya Lodge at Yosemite – Fish Camp, California

SYLLABUS An electronic syllabus and paper notebook will be provided onsite.

Printable PDFs of presentations will be available online one week prior to the course, so attendees can print out and bring pertinent presentations with them.

You must provide an email address with your registration to receive advance syllabus information. Paper copies of presentations will not be provided onsite.

MAY YOSEMITE – GENERAL AM SESSIONS

All lectures qualify for Self-Assessment Credit, and will include SA questions.

SUNDAY, MAY 22, 2016 - CHEST

7:00 am	Registration and Continental Breakfast	
7:30	Pulmonary Nodules: The Complete Assessment	David M. Naeger, MD
8:30	Revisiting the Basics: Hi-Res Chest CT	Brett M. Elicker, MD
9:15	Recess	
9:30	Typical and Atypical Appearances of Lung Cancer	David M. Naeger, MD
10:30	Acute Aortic Syndromes: a Case-Based Review	Brett M. Elicker, MD
11:00	Pulmonary Embolism Update: Maintaining Specificity	David M. Naeger, MD
12:00 pm	Questions & Discussion	
12:15	Adjourn	

MONDAY, MAY 23, 2016 - ABDOMEN

7:00 am	Continental Breakfast	
7:30	Retroperitoneal Masses: An Approach to Diagnosis	Emily M. Webb, MD
8:30	Cystic Pancreatic Masses	Emily M. Webb, MD
9:00	Atypical Pancreatic Masses	Emily M. Webb, MD
9:30	Recess	
9:45	Read with the Expert: CT Urography	Ronald J. Zagoria, MD
10:45	Imaging Update on Appendicitis	Emily M. Webb, MD
11:15	Solitary Liver Masses: Problem Solving with CT/MR	Emily M. Webb, MD
12:00 pm	Questions & Discussion	
12:15	Adjourn	



Accreditation General Session

The University of California, San Francisco School of Medicine (UCSF) is accredited by the Accreditation Council for Continuing Medical Education (ACCME) to provide continuing medical education for physicians.

UCSF designates this live activity for a maximum of 22.25 *AMA PRA Category 1 Credits*.™ Physicians should claim only the credit commensurate with the extent of their participation in the activity.

The total credits are inclusive of 9.0 in CT, 5.25 in MR, 2.25 in Ultrasound and 2.75 in Breast Imaging (of which 1.0 is in Breast MRI).

Physician Assistants The National Commission on Certification of Physician Assistants (NCCPA) states that *AMA PRA Category 1 Credits*™ are acceptable for continuing medical education requirements for recertification.

Nurses The California Board of Registered Nursing accepts *AMA PRA Category 1 Credits*™ toward license renewal.

This educational activity meets the requirement under California State Assembly Bill 1195, continuing education and cultural and linguistic competency.

TUESDAY, MAY 24, 2016 - US / NUC MED

7:00 am	Continental Breakfast	
7:30	Transplant US Imaging: Contributing to Patient Management	Tara A. Morgan, MD
7:50	Spleen: What You Need to Know in Less Than an Hour	Emily M. Webb, MD
8:50	Intro to Musculoskeletal US: Starting with Fluid Collections	Andrew S. Phelps, MD
9:10	Palpable Abnormalities of the Abdomen Pelvis	Tara A. Morgan, MD
9:30	Recess	
9:45	Incidentals and Artifacts on PET/CT: a Comprehensive Review	David M. Naeger, MD
10:45	Pitfalls in Abdominal Ultrasound	Tara A. Morgan, MD
11:15	Pitfalls in Obstetric Ultrasound	Tara A. Morgan, MD
11:45 pm	Questions & Discussion	
12:00	Adjourn	

WEDNESDAY, MAY 25, 2016

No formal program.

THURSDAY, MAY 26, 2016

7:00 am	Continental Breakfast	
7:30	Femoroacetabular Impingement	Matthew D. Bucknor, MD
8:15	Fat-Containing Lesions Throughout Body	Andrew S. Phelps, MD
9:00	ACL Reconstruction Imaging	Matthew D. Bucknor, MD
9:45	Recess	
10:00	Fractures in Kids: When to Worry	Andrew S. Phelps, MD
10:45	Breast Ultrasound: Anatomy, Techniques & Reporting	Jessica H. Hayward, MD
11:30	Radiation Doses: How Low Can You Go?	Andrew S. Phelps, MD
12:00 pm	Questions & Discussion	
12:15	Adjourn	

FRIDAY, MAY 27, 2016

7:00 am	Continental Breakfast	
7:30	Vomiting and Abdominal Pain in Kids: the Essential Diagnoses	Andrew S. Phelps, MD
8:15	Breast MRI: A BI-RADS Update	Jessica H. Hayward, MD
9:05	Pediatric Lumps and Bumps	Andrew S. Phelps, MD
9:25	Recess	
9:40	Calcifications: To Biopsy or Not to Biopsy?	Jessica H. Hayward, MD
10:15	Pediatric Female Pelvis	Andrew S. Phelps, MD
10:55	Imaging of Nodal Involvement in the Breast Cancer Patient	Jessica H. Hayward, MD
11:45	Questions & Discussion	
12:00 pm	Adjourn	



Backside of Half Dome by Heiko von RauBendorff

MAY YOSEMITE – OPTIONAL AFTERNOON MINI-COURSES

High-Resolution CT (Optional)

Sunday, May 22, 2016, 1:30 – 4:30 pm / limited to 20 registrants
Separate Registration required, see page 23

This hands-on workshop will introduce attendees to both basic and complex topics in the imaging of diffuse lung disease, and to increase an attendee's knowledge and proficiency when dealing with this complex and difficult topic. Following introductory presentations, attendees will analyze 60 unknown cases of diffuse lung disease.

Emphasis will be placed on pattern recognition, differential diagnosis and the role of radiology in the context of the multi-disciplinary approach to diffuse lung disease. Topics that will be covered include: usual interstitial pneumonia and its mimics, pattern-based approach to diffuse nodular lung disease, small airways and vascular diseases, and rare diffuse lung diseases.

SUNDAY, MAY 22, 2016

1:30 pm	Usual Interstitial Pneumonia and its Mimics	Dr. Elicker
2:15	Comprehensive Approach to Diffuse Nodular Lung Disease	Dr. Elicker
3:00	Small Airways and Vascular Diseases	Dr. Elicker
3:30	Radiologic-Pathologic Correlation	Dr. Elicker
4:00	Rare Diffuse Lung Diseases	Dr. Elicker
4:30	Adjourn	

Prostate MRI (Optional)

Monday, May 23, 2016, 1:30 – 4:30 pm / limited to 18 registrants
Separate Registration required, see page 23

This hands-on workshop will instruct audiences in the latest techniques for MR imaging of the prostate for cancer detection, tumor grading and staging. Following introductory lectures, participants will review “unknown” cases imaged with multiparametric MRI.

Course materials will include a prostate MRI report template that includes crucial treatment planning factors for reporting. Optimal imaging sequences and their evaluation will be demonstrated. In addition, techniques for computer segmentation, prostate lesion risk stratification, and preparation for MRI-US fusion guided biopsy will be explained and practiced with illustrative cases that participants will work through.

MONDAY, MAY 23, 2016

1:30 pm	Multiparametric Prostate MRI Technique and Interpretation	Dr. Zagoria
2:00	Basis and Techniques for MR-US Fusion Biopsies of Prostate	Dr. Zagoria
2:30	Prostate Biopsy: Gland Segmentation and Lesion Targeting	Dr. Zagoria
3:00	Case Review: Interactive and Proctored MRI	Dr. Zagoria
4:30	Adjourn	

Musculoskeletal Ultrasound (Optional)

Tuesday, May 24, 2016, 1:30 – 4:30 pm / limited to 16 registrants
Separate Registration required, see page 23

This three hour intensive workshop is optimized to help you bring this exciting new modality to your current practice. Didactic lectures, demonstrations, and hands-on experience with on-site models will provide attendees with a unique opportunity to hone their skills for both diagnostic studies and interventions. Participants (4 per machine) will practice scanning under direct supervision of a multidisciplinary team of faculty. By the end of the workshop, attendees will have developed a better understanding of the sonographic anatomy of the extremities and learned important tips for injections and other procedures.

TUESDAY, MAY 24, 2016

1:30 pm	Introduction to Musculoskeletal Ultrasound	Dr. Morgan
1:50	Hands-On Ultrasound of the Shoulder	Dr. Bucknor
2:50	Hands-On Ultrasound of the Ankle	Dr. Morgan
3:50	Hands-On Ultrasound - Advanced Concepts	Dr. Phelps
4:30	Adjourn	



Accreditation Optional Mini-Courses

The University of California, San Francisco School of Medicine (UCSF) is accredited by the Accreditation Council for Continuing Medical Education (ACCME) to provide continuing medical education for physicians.

HRCT of the Chest UCSF designates this live activity for a maximum of 3.0 *AMA PRA Category 1 Credits*.™ It is also inclusive of 3.0 credits in CT, and 3 Self-Assessment Credits.

Prostate MRI UCSF designates this live activity for a maximum of 3.0 *AMA PRA Category 1 Credits*.™ It is also inclusive of 3.0 credits in MRI, and 3 Self-Assessment Credits.

Musculoskeletal Ultrasound UCSF designates this live activity for a maximum of 3.0 *AMA PRA Category 1 Credits*.™ It is also inclusive of 3.0 credits in Ultrasound, and 3 Self-Assessment Credits.

Physicians should claim only the credit commensurate with the extent of their participation in each activity.

These educational activities meet the requirement under California State Assembly Bill 1195, continuing education and cultural and linguistic competency.

Yosemite National Park

www.yosemitepark.com or www.nps.gov/yose

Yosemite National Park is a significant part of California's history, as well as a pivotal factor in the national parks movement. Home to four-thousand years of Native American cultural heritage, Yosemite has become a world heritage site, and has inspired the formation of the Sierra Club, which plays an important role in wildlife conservation and biological diversity preservation.

The Park embraces almost 1,200 square miles of scenic wild lands of the central Sierra Nevada range, from 2,000 to 13,000 feet above sea level. Highlights of Yosemite include the Tioga Road (a restored miner's mountain pass), Tuolumne Meadows, Yosemite Valley and Merced Canyon, Yosemite and Bridalveil Falls, and El Capitan and Half-Dome granite cliffs (including the largest exposed granite monolith and the greatest concentration of granite domes in the world).

Both Tenaya Lodge and Yosemite National Park offer a variety of activities and tours to give the visitor every opportunity to enjoy the Park's natural beauty and grandeur.



Half Dome



Dogwood Flower

Optional Tours

Tel: (877) 247-9241

- Morning-Nature, Waterfall and Evening Flashlight Hikes
- Waterfall Bike & Hike Picnic
- Horseback Riding through the Sierras
- Fly Fishing (and individual rentals), Hook-a-Lunker at Bass Lake, Leisure and White-Water Rafting on the Merced River
- Yosemite Sugar Pine Railroad, Hitch-a-Ride on the Jenny Railcars, Moonlight Special Train ride
- Rock Climbing - full and half-day trips for novices and veterans at Yosemite Valley
- Watersports Equipment Rentals at nearby Bass Lake
- Spa Treatments at the *Ascent Spa* (Complimentary embellishment (\$15 value), with spa service booked with 72-hour notice)
- Golfing at two local area offering 9 hole courses each

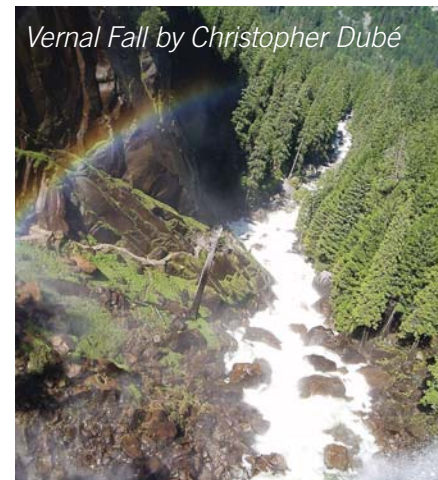
Yosemite Sightseeing

Discover Yosemite Tours: (877) 247-9241

Offers daily tours into the Park departing from Tenaya Lodge. These narrated tours will allow you to take in all the sights including El Capitan, Half Dome, Bridalveil Falls, Yosemite Falls and more. There are many stops along the way to allow time for photo opportunities. The tour is available daily. Advanced reservations are highly recommended. Sunset, half-day and full-day in-park tours are also available. All activities and tours are dependent on weather conditions.



Upper Yosemite Falls



Vernal Fall by Christopher Dubé

Leisure Activities

Tel: (877) 247-9241

www.tenayalodge.com

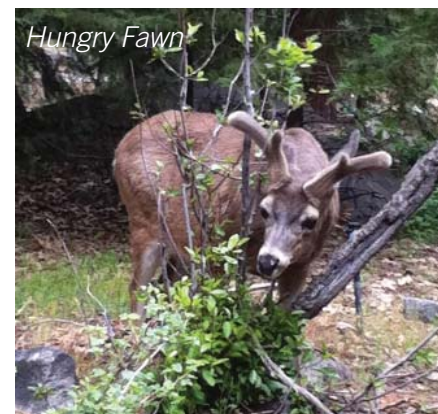
Half-day course sessions and a full-day off on Wednesday provide ample opportunity for registrants and their families to enjoy all the region has to offer. Tenaya Lodge makes any time family time with a host of activities for families of all ages. For many, the first trip to Yosemite is a Western rite of passage, and Tenaya Lodge offers activities that truly enhance the Yosemite experience.

www.tenayalodge.com/adventure-club.aspx

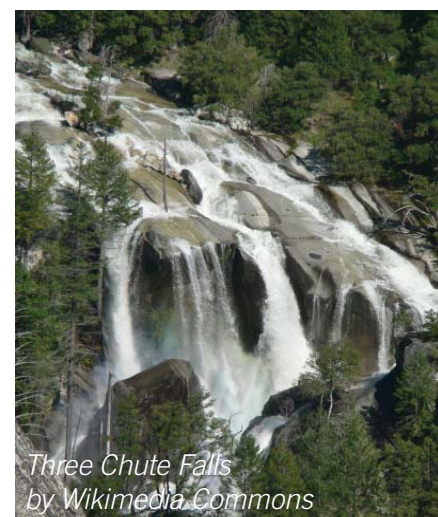
Tel: (877) 247-9241

Children's programs are available for ages 5-12 years. The Sierra Adventure Club is a morning program available from 10 am – 1 pm for \$40 per child (includes lunch). The Kids Camp is an evening program available from 5:30–9:30 pm for \$50 per child including dinner. Personalized childcare service also available (advance reservations required, upon availability).

To book activities prior to your stay, contact Concierge Services at the Tenaya Lodge at the number above.



Hungry Fawn



*Three Chute Falls
by Wikimedia Commons*

Accommodations

The Tenaya Lodge at Yosemite / Tel: (800) 635-5807 *2 or (559) 683-6555
1122 Highway 41, Fish Camp, California 93623

www.tenayalodge.com, online reservation group code: 3109WD

Room rate: \$249 (single/double) Reservation Deadline: April 20, 2015

When making your accommodation decisions, please take into consideration that staying at the host hotel helps UCSF meet its contractual obligations and keeps registration fees reasonable. To ensure the conference rate, please book directly with the hotel using, the website and above code, reservation link: <http://tinyurl.com/tenaya-ucsf> or phone numbers listed above.

Set on 48 acres bordering the Sierra National Forest and just five minutes from the south entrance of Yosemite National Park, the Tenaya Lodge is the perfect setting to explore and relax among nature's grandeur and beauty. With indoor and outdoor pools, a full-service spa, fitness center and restaurants, the mile-high Tenaya Lodge is the ideal home-base for discovering the majesty of the mountains.

A block of rooms has been reserved at the Tenaya Lodge for this conference at a special group rate as listed above. You may make your reservation by calling the numbers listed above, or online using the above website and group code. Room requests made after the reservations deadline will be honored at the conference room rate on a space-available basis.

Please be aware that room availability on Friday and Saturday nights before and after the meeting (Memorial Day weekend) is very limited, so be sure to make your reservations early. Canine-companion rooms available upon request, \$75 per stay for up to two dogs (limited availability, pets cannot be left unattended). Parking is complimentary and resort fee is included in the conference rate.

A credit card is required for confirmation, and you will be charged an advance one-nights' deposit when making your reservation. Room rates are subject to 11% state/county taxes; \$1 charge per-night, per-room for the Yosemite Conservancy fund. Cancellation requests must be made at least 7 days prior to scheduled arrival to receive a full refund; all reductions to a guest's length of stay must be received 48 hours or more prior to arrival. If a reduction in room nights is made within 48 hours of arrival, the guest will be required to pay for the full original length of stay. All early departures, no shows, and late arrivals will be charged the contracted nightly rate for each night the reserved room is not occupied by the individual.

The Ascent Spa (559) 692-8954 is offering a complimentary embellishment (\$15 value) booked prior to arrival for UCSF attendees and their guests.



Air Travel

UCSF Radiology has negotiated special discounts with Delta and United Airlines for radiology course attendees to San Francisco (SFO) and Oakland (OAK).

To ensure the lowest fares, please book with the airline directly, using the promo code below:

Delta www.delta.com code: NMLQD (800) 328-1111 *(add'l fee via phone)*

United www.united.com code: ZVGJ386709 (800) 426-1122 *(add'l fee via phone)*



By Mike Petrucci

Car Rental

Toll-free: (800) 654-2240 / CV# 01SY0262

Arrangements have been made with **Hertz Car Rental** for special rates during this UCSF meeting, as well as one week before and after this meeting. Call the Hertz Convention Desk at the number above, and be sure to tell the agent the meeting name and CV number listed above.

Driving Directions: www.tenayalodge.com/directions.aspx

Drive-times:

- From San Francisco / Bay Area (west) is approximately 4 hours
- From the Fresno Airport (south) is approximately 1 hour
- From the Los Angeles area (south) is approximately 5 hours

For the best road and traffic conditions, it is recommended that you travel to the Tenaya Lodge via the junction of Routes 41 and 49 at Oakhurst, regardless from which airport / direction you are driving.



REGISTRATION

REGISTRANT INFORMATION (PLEASE PRINT)

Name _____
First Last Degree

Address _____

Tel _____ Fax _____
Area code Area code

E-mail _____

You must provide an email address with your registration to receive advance syllabus information. Paper copies will not be provided on site.

Would you like to receive general UCSF Radiology CME email notices? Yes No

Month/Day of Birth for record verification: _____ / _____ / X X
month day

METHOD OF PAYMENT Check, payable to **UC Regents.**
 Visa Mastercard American Express

Card No. _____

Exp. Date _____ Signature _____

Cancellation A refund of the enrollment fee, less \$75, will be made upon receipt of a written request only (fax or email), no refunds will be made after these dates:

May Yosemite deadline: Fri, May 6, 2016
June Bermuda deadline: Fri, June 10, 2016

Payment may be made by credit card or by check or money order drawn on a U.S. bank in U.S. currency. We regret that we cannot accept checks drawn on foreign banks. Enrollment confirmation will be mailed to you within two weeks of receipt of the application. In the unlikely event that the program is cancelled, UCSF Radiology will refund the registration fee in full, but cannot be responsible for any hotel or travel costs.

Four easy ways to register:

- Online** at www.cme.ucsf.edu
- Mail** this form to: UCSF Office of CME, PO Box 45368, SF, CA 94145-0368
- Fax** this form to 415-502-1795
- Phone** using Visa, Amex or MC, 415-476-5808, 8:30am-4:00pm (Pacific time)

PRACTICAL DIAGNOSTIC IMAGING AT YOSEMITE / MAY

May 22-27, 2016 (RAD16 033)

*By 3/25/16 After 3/25/16 Loyalty Discount applies only to **live** courses attended*

<input type="radio"/> \$1,125	<input type="radio"/> \$1,200	Standard Registration	No UCSF Rad pd course 2015 cal yr
<input type="radio"/> \$1,005	<input type="radio"/> \$1,080	Silver Status 10% discount	1 UCSF Rad pd course 2015 cal yr
<input type="radio"/> \$ 885	<input type="radio"/> \$ 960	Gold Status 20% discount	2 UCSF Rad pd courses 2015 cal yr
<input type="radio"/> \$ 765	<input type="radio"/> \$ 840	Platinum Status 30% disc	3+ UCSF Rad pd courses 2015 cal yr

Daily Fee : 5/22 Sun 5/23 Mon 5/24 Tue 5/26 Thr 5/27 Fri
AM session only, \$300 per (no discounts, cancellation policy applies)

- \$400 *Optional* Sun PM 5/22 - HRCT of the Chest
- \$400 *Optional* Mon PM 5/23 - Prostate MRI
- \$400 *Optional* Tue PM 5/24 - Musculoskeletal Ultrasound

IMAGING IN BERMUDA / JUNE

June 26 - July 1, 2016 (RAD16 034)

*By 4/29/16 After 4/29/16 Loyalty Discount applies only to **live** courses attended*

<input type="radio"/> \$1,125	<input type="radio"/> \$1,200	Standard Registration	No UCSF Rad pd course 2015 cal yr
<input type="radio"/> \$1,005	<input type="radio"/> \$1,080	Silver Status 10% discount	1 UCSF Rad pd course 2015 cal yr
<input type="radio"/> \$ 885	<input type="radio"/> \$ 960	Gold Status 20% discount	2 UCSF Rad pd courses 2015 cal yr
<input type="radio"/> \$ 765	<input type="radio"/> \$ 840	Platinum Status 30% disc	3+ UCSF Rad pd courses 2015 cal yr

Daily Fee: 6/26 Sun 6/27 Mon 6/28 Tue 6/30 Thr 7/1 Fri
\$300 per (no discounts, cancellation policy applies)